

Customer :

customer

Customer part :

customer part

Comment :

Comment

S1=2.34

S2=3.32

Tmax=456

Tp S2=495.0

PI=0.41

HI=123

Sample =1651.60

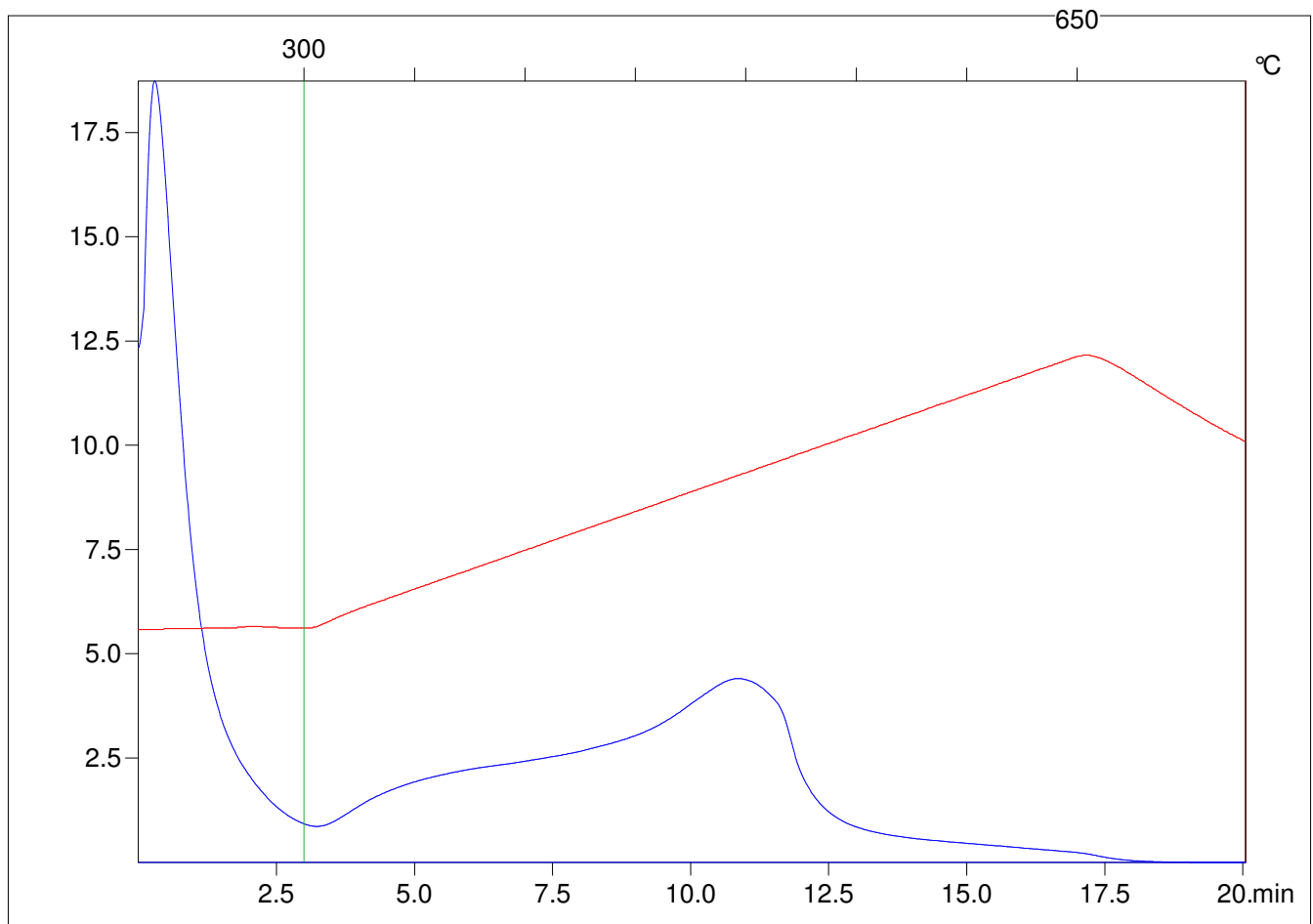
Method =Bulk Rock

Cycle=Basic

KFID(10*9)=1444

Qty =70.5

TOC=2.69



C:\VINC\PK1792\PK067.R00 : FID pyrolysis graphic

State

Pyro Status

Oxi Status